

# MRED PROGRAM INDONESIA

Managing Risks through  
Economic Development  
in Sigi District



## » BACKGROUND

The challenges that correlate among natural disasters, climate change, market instability, danger of environmental health and degradation of ecosystems in Indonesia are aggravated by the fast-scale development. Escalating population vulnerability chronically and building a fair and sustainable development in shocks and stresses context need a new and innovative approach. Mercy Corps Indonesia through data-based Disaster Risk Management always supports individual and community involvement for Disaster Risk Reduction (DRR).

## » WHAT WE DO

MRED Indonesia focuses on building disaster-resilient communities by strengthening the capacity of vulnerable groups to minimize the impact of natural disasters and climate-related shocks and stresses through the partnership of various stakeholders, such as government, private sector and civil society in Sigi District, Central Sulawesi.

## » TARGET AREAS AND PARTICIPANTS

In its implementation, MRED Indonesia works on disaster risk management activities, climate change adaptation, including vulnerability and capacity assessment, awareness raising, and community resilience pilot projects in Sigi District, in two (2) sub-districts, thirty-four (34) kampung in ten (10) villages, including:

1. Kulawi Sub-District: Toro Village, Namo Village, Salua Village and Mataue Village
2. South Dolo Sub-District: Bangga Village, Sambo Village, Walatana Village, Poi Village, Balongga Village and Pulu Village

Moreover, MRED Indonesia targets program participants, such as:

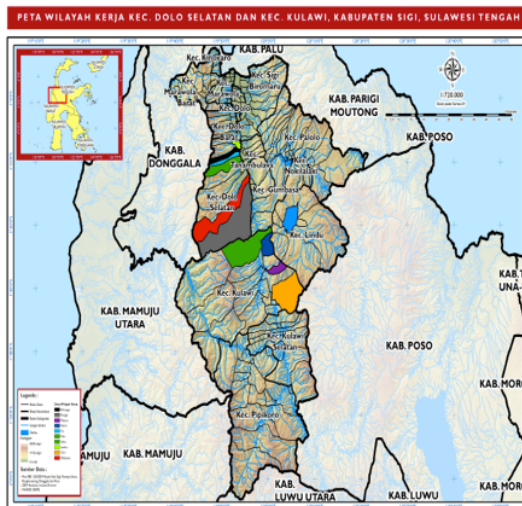
- » 2000 vulnerable households in 10 villages and 34 kampung have improved capacities to prepare for, withstand and mitigate impact of natural hazards and climate related shocks and stresses.
- » Public, private and civil society institutions contribute to improved community DRR capacities
- » Knowledge management systems utilize evidence, research and learning for adaptive management and advocacy for replication and scale of best practices from MRED Indonesia.

# MRED PROGRAM INDONESIA

Managing Risks through  
Economic Development  
in Sigi District



## WORK AREA OF MRED INDONESIA SIGI, CENTRAL SULAWESI



## PROJECT DURATION

MRED Indonesia will be implemented in a two-year period, starting from January 2020 to January 2022.

## PARTNERSHIP

MRED Indonesia has partnered with the Karsa Institute for the implementation of livelihood activities and the Penabulu Foundation for the implementation of Disaster Risk Reduction activities. This partnership is from March 2020 until July 2021.

## PROGRAM APPROACH

MRED Indonesia Program is built by multi-sectoral stakeholder collaboration and coordination from the national level to the district, sub-district, village and kampung levels by involving various parties, namely the government, civil society groups, and private sector actors to facilitate discussions and utilize technical resources, and finance needed for Disaster Risk Reduction (DRR) activities and market system development. This will not only strengthen program implementation but will also build social capital by supporting and assisting vulnerable communities and the government and/or private sector which will enable the continuation of program interventions beyond the program period. Furthermore, the program also collaborates with the District Disaster Management Agency (BPBD), the Disaster Risk Reduction Forum (FPRB) and the Village Disaster-Preparedness Group (KSB), Village-Owned Enterprises (BUMDes) in Sigi District, private parties, namely off-takers and Jasindo Insurance, and academics from the Faculty of Agriculture and the Faculty of Urban Area Development, Tadulako University.

For More Information, Please Contact:

**Dewi Hanifah**

Program Manager

[ghanifah@id.mercycorps.org](mailto:ghanifah@id.mercycorps.org)